

Movement Detectors

Movement detectors



KNX ARGUS 220	
	
Version	Art. no.
polar white	MTN632519
dark brazil	MTN632515
aluminium	MTN632569

KNX movement detector for outdoors. 220° surface monitoring for large house fronts and sections of the house. With integrated bus coupler. The physical address is programmed with a magnet.

- 360° short-range zone (approx. 4 m radius).
- Large wiring compartment and plug system.
- Looping is possible.
- LED function display for fast alignment at the installation site.
- Operating elements are protected under the easily accessible cover plate.
- Flexibly adjustable sensor head.
- Possible to blank out individual lens areas.

Can be installed on walls and ceilings without additional accessories. Can be mounted on inner/outer corners and stationary pipes using a mounting bracket.

KNX software functions: Five movement blocks: up to four functions can be triggered per block. Telegrams: 1 bit, 1 byte, 2 bytes.

Normal operation, master, slave, safety pause, disable function. Sensitivity, brightness and staircase timer can be set using the ETS or the potentiometer. Self-adjusting staircase timer.

Angle of detection: 220°

Range: max. 16 m

Number of levels: 7

Number of zones: 112 with 448 switching segments

Light sensor: infinitely variable from approx. 3 - 1000 lux, ∞ lux (infinite: movement detection is independent of the position of the sensor head)

Time: can be set externally from 1 s to approx. 8 min. in 6 levels or via ETS from approx. 3 s to approx. 152 hours

Sensitivity: infinitely adjustable

Possible settings for sensor head:

Wall mounting: 9° up, 24° down, 12° left/right, ±12° axial


Ceiling mounting: 4° up, 29° down, 25° left/right, ±8.5° axial

EC directives: Low-voltage guideline 2006/95/EC and EMC directive 2004/108/EC

Type of protection: IP 55

Accessories: Mounting bracket MTN565291, Programming magnet MTN639190

Contents: With cover plate and segments to limit the area of detection, screws and plugs.

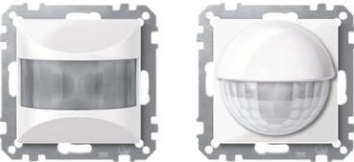
Programming magnet	
	
Version	Art. no.
	MTN639190

Non-contact programming of the physical address of the KNX ARGUS 220.

In KNX, to be completed with: KNX ARGUS 220 MTN6325..

Movement Detectors

Movement detectors System M



KNX ARGUS 180, flush-mounted		KNX ARGUS 180/2.20 m flush-mounted	
			
Discontinued July 2022			
Version	Art. no.	Version	Art. no.
 white, glossy	MTN631644	 white, glossy	MTN631744
<input type="checkbox"/> polar white, glossy	MTN631619	<input type="checkbox"/> polar white, glossy	MTN631719
<input type="checkbox"/> active white, glossy	MTN631625	<input type="checkbox"/> active white, glossy	MTN631725
 anthracite	MTN632614	 anthracite	MTN632714
 aluminium	MTN632660	 aluminium	MTN632760

For System M.

Movement detector for indoors.

When a movement is detected, a data telegram defined by the programming is transmitted.

With integrated bus coupling unit.

KNX software functions: Five movement blocks: up to four functions can be triggered per block. Telegrams: 1 bit, 1 byte, 2 bytes.

Normal operation, master, slave, safety pause, disable function. Sensitivity, brightness and staircase timer can be set using the ETS or the potentiometer. Self-adjusting staircase timer.

Angle of detection: 180°

Range: 8 m (for mounting height of 1.1 m)

Number of levels: 1

Number of zones: 14

Sensitivity: infinitely adjustable (ETS or potentiometer)

Light sensor: infinitely adjustable from approx. 10 to 2000 Lux (ETS or potentiometer)

Time: adjustable in steps from 1 s to 8 min (potentiometer) or adjustable from 1 s to 255 hours (ETS)

EC Directives: Low-voltage guideline 2006/95/EC and EMC guideline 2004/108/EC

Contents: With bus connecting terminal and supporting plate.

For System M.

Indoor movement detector with anti-crawl protection.

When a movement is detected, a data telegram defined by the programming is transmitted.

With integrated bus coupling unit. For wall mounting in a size 60 mounting box, optimal installation at 2.2 m.

KNX software functions: Five movement blocks: up to four functions can be triggered per block. Telegrams: 1 bit, 1 byte, 2 bytes.

Normal operation, master, slave, safety pause, disable function. Sensitivity, brightness and staircase timer can be set using the ETS or the potentiometer. Two movement sensors: the sensitivity and range can be set separately for each sensor. Self-adjusting staircase timer.

Angle of detection: 180°

Range: 8 m right/left, 12 m to the front (for a mounting height of 2.20 m)

Mounting height: 2.2 m or 1.1 m with half the range

Number of levels: 6

Number of zones: 46

Number of movement sensors: 2, sector-orientated, adjustable

Sensitivity: infinitely adjustable (ETS or potentiometer)

Light sensor: infinitely adjustable from approx. 10 to 2000 Lux (ETS or potentiometer)

Time: adjustable in steps from 1 s to 8 min (potentiometer) or adjustable from 1 s to 255 hours (ETS)

EC Directives: Low-voltage guideline 2006/95/EC and EMC guideline 2004/108/EC

Contents: With bus connecting terminal and supporting plate.

With cover segments to limit the area of detection.

Movement Detectors

Movement detectors System D



KNX ARGUS Presence 180/2.20 m flush-mounted		
		
Version	Art. no.	
Thermoplastic		
<input type="checkbox"/> lotus white	MTN6302-6035	
<input checked="" type="checkbox"/> anthracite	MTN6302-6034	
<input type="checkbox"/> sahara	MTN6302-6033	
<input type="checkbox"/> stainless steel	MTN6302-6036	
<input type="checkbox"/> nickel metallic	MTN6302-6050	
<input type="checkbox"/> champagne metallic	MTN6302-6051	
<input type="checkbox"/> mocca metallic	MTN6302-6052	

For System D.
Presence detection indoors.
If KNX ARGUS Presence detects smaller movements in the room, data telegrams are transmitted via KNX to control the lighting, blind or heating at the same time.
When the lighting is controlled by brightness-dependent movement detection, the device constantly monitors the brightness in the room. If sufficient natural light is at hand, the device switches the artificial light off even if a person is present. The overshoot time can be adjusted using the ETS.
With integrated bus coupling unit. For wall mounting in a size 60 mounting box, optimal installation at 2.2 m. With anti-crawl protection.
KNX software functions: Five movement/presence blocks: up to four functions can be triggered per block. Telegrams: 1 bit, 1 byte, 2 bytes.
Normal operation, master, slave, monitoring, safety pause, disable function. Two movement sensors: the sensitivity and range can be set separately for each sensor. Self-adjusting staircase timer. Actual brightness value: can be detected via the internal and/or an external light sensor. Actual value correction.
Angle of detection: 180°
Range: 8 m right/left, 12 m to the front (for a mounting height of 2.20 m)
Mounting height: 2.2 m or 1.1 m at half the range
Time: adjustable in steps from 1 s to 8 min (potentiometer) or adjustable from 1 s to 255 hours (ETS)
Number of levels: 6
Number of zones: 46
Number of movement sensors: 2, separately adjustable
Light sensor: internal light sensor infinitely adjustable from approx. 10 to 2000 Lux (ETS); external light sensor via KNX
EC Directives: Low-voltage guideline 2006/95/EC and EMC guideline 2004/108/EC
Accessories: Fixing frame for 3-module box MTN6270-0015
D-Life frame, 1-gang, for 3-module box MTN6010-65xx
Contents: With bus connecting terminal and supporting plate.
With cover segments to limit the area of detection.

Movement Detectors

Movement detectors Altira



KNX Movement detector 180		
Version	Art. no.	
<input type="checkbox"/> white	ALB45153	
<input checked="" type="checkbox"/> aluminium	ALB46153	

2 modules
Movement detector for indoors.
When a movement is detected, a data telegram defined by the programming is transmitted. With integrated bus coupler. The bus is connected using a bus connecting terminal.
KNX software functions: Five movement blocks: up to four functions can be triggered per block. Telegrams: 1 bit, 1 byte, 2 bytes.
Normal operation and surveillance operation, master, slave, safety pause, disable function. Sensitivity, brightness and staircase timer can be set using the ETS or the potentiometer. Two movement sensors: the sensitivity and range can be set separately for each sensor. Self-adjusting staircase timer.
Angle of detection: 180°
Number of movement sensors: 2, sector-orientated, adjustable (ETS)
Recommended mounting height: 1 m to 2.5 m
Range: at 2.15 m mounting height: Approx. 9 m on all sides, adjustable in 10 steps (rotary switch or ETS)
Detection brightness: Infinite setting from approx. 10 lux to approx.1000 lux (rotary switch) or from 10 lux to 2000 lux (ETS)
Overshoot time: Adjustable in 6 steps from approx. 1 s to approx. 8 min (rotary switch) or adjustable from 1 s to 255 hours (ETS)
EC guidelines: Low-voltage guideline 2006/95/EEC and EMC guideline 2004/108/EC
Contents: With bus connecting terminal.

Movement detectors Unica



KNX Movement detector 180		
Version	Art. no.	
<input type="checkbox"/> white	MGU3.533.18	
<input checked="" type="checkbox"/> ivory	MGU3.533.25	


2 modules
In Unica design.
Movement detector for indoors.
When a movement is detected, a data telegram defined by the programming is transmitted. With integrated bus coupler. The bus is connected using a bus connecting terminal.
KNX software functions: Five movement blocks: up to four functions can be triggered per block. Telegrams: 1 bit, 1 byte, 2 bytes.
Normal operation and surveillance operation, master, slave, safety pause, disable function. Sensitivity, brightness and staircase timer can be set using the ETS or the potentiometer. Two movement sensors: the sensitivity and range can be set separately for each sensor. Self-adjusting staircase timer.
Angle of detection: 180°
Number of movement sensors: 2, sector-orientated, adjustable (ETS)
Recommended mounting height: 1 m to 2.5 m
Range: at 2.15 m mounting height: Approx. 9 m on all sides, adjustable in 10 steps (rotary switch or ETS)
Detection brightness: Infinite setting from approx. 10 lux to approx.1000 lux (rotary switch) or from 10 lux to 2000 lux (ETS)
Overshoot time: Adjustable in 6 steps from approx. 1 s to approx. 8 min (rotary switch) or adjustable from 1 s to 255 hours (ETS)
EC guidelines: Low-voltage guideline 2006/95/EEC and EMC guideline 2004/108/EC
Contents: With bus connecting terminal.



Movement Detectors

Movement detectors Unica Top



KNX Movement detector 180



Version	Art. no.
 aluminium	MGU3.533.30
 graphite	MGU3.533.12


2 modules
In Unica Top design.
Movement detector for indoors.
When a movement is detected, a data telegram defined by the programming is transmitted.
With integrated bus coupler. The bus is connected using a bus connecting terminal.
KNX software functions: Five movement blocks: up to four functions can be triggered per block. Telegrams: 1 bit, 1 byte, 2 bytes.
Normal operation and surveillance operation, master, slave, safety pause, disable function.
Sensitivity, brightness and staircase timer can be set using the ETS or the potentiometer. Two movement sensors: the sensitivity and range can be set separately for each sensor. Self-adjusting staircase timer.
Angle of detection: 180°
Number of movement sensors: 2, sector-orientated, adjustable (ETS)
Recommended mounting height: 1 m to 2,5 m
Range: at 2.15 m mounting height: Approx. 9 m on all sides, adjustable in 10 steps (rotary switch or ETS)
Detection brightness: Infinite setting from approx. 10 lux to approx. 1000 lux (rotary switch) or from 10 lux to 2000 lux (ETS)
Overshoot time: Adjustable in 6 steps from approx. 1 s to approx. 8 min (rotary switch) or adjustable from 1 s to 255 hours (ETS)
EC guidelines: Low-voltage guideline 2006/95/EEC and EMC guideline 2004/108/EC
Contents: With bus connecting terminal.

Presence Detectors

KNX presence detector



SpaceLogic KNX Presence detector DI



Version	Art. no.
white	MTN6300-0019

For the Gulf market.
KNX presence detector for installation in false ceilings. The device detects the presence of persons even with small movements and is used to control 2 channels.
With 2 input channels for connecting push-buttons with which the lighting can be switched on/off or dimmed. The presence detector can be used as a single detector or in primary/secondary mode.
The detector is mounted with a retaining spring in a round aperture (diameter 68 mm) in a suspended ceiling (e.g. plasterboard). The minimum installation depth is 67 mm.
Functions of the KNX software:
Primary/secondary mode: in secondary mode, the detector is used only for motion detection. In primary mode the detector can be set in Auto mode, Semi-auto mode or Test mode.
Auto mode (presence): during the delay time, if the ambient brightness is higher than the set lux value for 5 minutes, the load will be switched off regardless of motion detection.
Semi-auto mode: An initial press on a push-button is required to switch on the load.
Test mode: fix delay time of 3 seconds for each movement detection.
Supply voltage: KNX bus voltage
Bus current: approx. 10 mA
Number of channels: 2
Binary inputs: 2, cable length max. 100 m, cross section 1.0-2.5 mm²
Mounting height: 2 m ... 3 m (optimal 2.5 m)
Detection range: 360°, Ø 9 m at 2.5 m mounting height
Function modes: Auto (presence), semi auto (absence), test
Sensitivity: adjustable
Detection brightness: 10 ... 2000 Lux
Time setting: 3 s, 1 min - 255 min
Protection type: IP20
Dimensions: 99.2 x 74.1 mm (Ø x H)

Presence Detectors



KNX High Bay presence detector FM



Version	Art. no.
white	MTN6304-0019

KNX presence detector for flush-mounted installation in rooms with high ceilings, e.g. high-bay warehouses or sports halls.

The presence detector detects the presence of persons even in the case of small movements. Control of the lighting is carried out dependent on movement (2 channels) or additionally dependent on brightness (1 channel) via KNX telegrams. If there is sufficient daylight, the lighting is switched off or adapted to a detection brightness (constant light regulation).

Devices for heating, ventilation or air conditioning (HVAC) can also be controlled (1 channel). The presence detector has two detection sensors (passive infrared), a brightness sensor, an IR receiver and an LED to indicate a detected movement, in test mode indication of the activated programming mode.

The presence detector can be used as a single detector or in master-slave mode. The setting is carried out in the ETS.

The presence detector can also be set and tested without the ETS, but with the appropriate remote control (available as an accessory).

Indoor installation on ceiling (IP 20) on flush-mounted housing with two screws.

Optionally, a protective metal basket (available as an accessory) can be installed to protect the lens.

KNX software functions: Movement detection: The detected presence of a person is signalled using a KNX telegram. Lighting control: The room lighting is controlled depending on movement and brightness. If there is sufficient daylight, the lighting is switched off or dimmed to a constant level. Basic lighting: Activates basic lighting after the overtravel time has elapsed, either for a limited time or dependent on the brightness. HVAC control: Devices for heating, ventilation, air conditioning (HVAC) are switched from energy-saving mode to comfort mode dependent on movement. Operating modes: Single detector, Master, Slave, Master in parallel operation. Master: Controls the lighting and HVAC system. Additional detectors as slaves increase the area of detection. Slave: Only detects movement in its area and sends the information to the master. Master in parallel operation: Controls the lighting in its area (can be expanded with additional detectors as slaves). The only master in the installation only controls the HVAC system for the entire area. 2 logic gates

Angle of detection: 360°

Opening angle: 180°

Range: Radius of max. 18 m (tangential)

Mounting height: 4 - 14 m

Optimal mounting height: 12 m

Time setting: 60 s - 255 min.

Sensors: 2 x passive infrared

Number of zones: 1416

Detection brightness: internal light sensor adjustable from approx. 2 to 1000 Lux

IP protection rating: IP 20

EC guidelines: Low voltage directive 2006/95/EC and EMC directive 2004/108/EC

Dimensions: 124 x 78 mm (Ø x H)

Accessories: Remote control for KNX presence detector MTN6300-0002

Protective basket for KNX presence detector MTN6300-0001

Presence Detectors



KNX Corridor presence detector FM



Version	Art. no.
white	MTN6305-0019

KNX presence detector for flush-mounted installation in long corridors.

The presence detector detects the presence of persons even in the case of small movements. Control of the lighting is carried out dependent on movement (2 channels) or additionally dependent on brightness (1 channel) via KNX telegrams. If there is sufficient daylight, the lighting is switched off or adapted to a detection brightness (constant light regulation).

Devices for heating, ventilation or air conditioning (HVAC) can also be controlled (1 channel). The presence detector has two detection sensors (passive infrared), a brightness sensor, an IR receiver and an LED to indicate a detected movement, in test mode indication of the activated programming mode.

The presence detector can be used as a single detector or in master-slave mode. The setting is carried out in the ETS.

The presence detector can also be set and tested without the ETS, but with the appropriate remote control (available as an accessory).

Indoor installation on ceiling (IP 20) on flush-mounted housing with two screws.

Optionally, a protective metal basket (available as an accessory) can be installed to protect the lens.

KNX software functions: Movement detection: The detected presence of a person is signalled using a KNX telegram. Lighting control: The room lighting is controlled depending on movement and brightness. If there is sufficient daylight, the lighting is switched off or dimmed to a constant level. Basic lighting: Activates basic lighting after the overtravel time has elapsed, either for a limited time or dependent on the brightness. HVAC control: Devices for heating, ventilation, air conditioning (HVAC) are switched from energy-saving mode to comfort mode dependent on movement. Operating modes: Single detector, Master, Slave, Master in parallel operation. Master: Controls the lighting and HVAC system. Additional detectors as slaves increase the area of detection. Slave: Only detects movement in its area and sends the information to the master. Master in parallel operation: Controls the lighting in its area (can be expanded with additional detectors as slaves). The only master in the installation only controls the HVAC system for the entire area. 2 logic gates

Angle of detection: 360°

Opening angle: 45°

Range: max. 20 x 4 m (tangential)
max. 12 x 4 m (radial)

Mounting height: 2.5 - 5 m

Optimal mounting height: 2.8 m

Time setting: 60 s - 255 min.

Sensors: 2 x passive infrared

Number of zones: 280

Detection brightness: internal light sensor adjustable from approx. 2 to 1000 Lux

Protection rating: IP 20

EC Directives: Low voltage directive 2006/95/EC and EMC directive 2004/108/EC

Dimensions: 124 x 78 mm (Ø x H)

Accessories: Remote control for KNX presence detector MTN6300-0002

Protective basket for KNX presence detector MTN6300-0001

Presence Detectors



KNX High Bay presence detector



Version	Art. no.
white	MTN6354-0019

KNX presence detector for surface-mounted installation in rooms with high ceilings, e.g. high-bay warehouses or sports halls.

The presence detector detects the presence of persons even in the case of small movements. Control of the lighting is carried out dependent on movement (2 channels) or additionally dependent on brightness (1 channel) via KNX telegrams. If there is sufficient daylight, the lighting is switched off or adapted to a detection brightness (constant light regulation).

Devices for heating, ventilation or air conditioning (HVAC) can also be controlled (1 channel). The presence detector has two detection sensors (passive infrared), a brightness sensor, an IR receiver and an LED to indicate a detected movement, in test mode indication of the activated programming mode.

The presence detector can be used as a single detector or in master-slave mode. The setting is carried out in the ETS.

The presence detector can also be set and tested without the ETS, but with the appropriate remote control (available as an accessory).

Indoor installation on ceiling (IP 54) with surface-mounted housing with two screws and plugs.

Optionally, a protective metal basket (available as an accessory) can be installed to protect the lens.

KNX software functions: Movement detection: The detected presence of a person is signalled using a KNX telegram. Lighting control: The room lighting is controlled depending on movement and brightness. If there is sufficient daylight, the lighting is switched off or dimmed to a constant level. Basic lighting: Activates basic lighting after the overtravel time has elapsed, either for a limited time or dependent on the brightness. HVAC control: Devices for heating, ventilation, air conditioning (HVAC) are switched from energy-saving mode to comfort mode dependent on movement. Operating modes: Single detector, Master, Slave, Master in parallel operation. Master: Controls the lighting and HVAC system. Additional detectors as slaves increase the area of detection. Slave: Only detects movement in its area and sends the information to the master. Master in parallel operation: Controls the lighting in its area (can be expanded with additional detectors as slaves). The only master in the installation only controls the HVAC system for the entire area. 2 logic gates

Angle of detection: 360°

Opening angle: 180°

Range: Radius of max. 18 m (tangential)

Mounting height: 4 - 14 m

Optimal mounting height: 12 m

Time setting: 60 s - 255 min.

Sensors: 2 x passive infrared

Number of zones: 1416

Detection brightness: internal light sensor adjustable from approx. 2 to 1000 Lux

Protection rating: IP 54

EC Directives: Low voltage directive 2006/95/EC and EMC directive 2004/108/EC

Dimensions: 124 x 65 mm (Ø x H)

Accessories: Remote control for KNX presence detector MTN6300-0002

Protective basket for KNX presence detector MTN6300-0001

Presence Detectors



KNX Corridor presence detector



Version	Art. no.
white	MTN6355-0019

KNX presence detector for surface-mounted installation in long corridors.

The presence detector detects the presence of persons even in the case of small movements. Control of the lighting is carried out dependent on movement (2 channels) or additionally dependent on brightness (1 channel) via KNX telegrams. If there is sufficient daylight, the lighting is switched off or adapted to a detection brightness (constant light regulation).

Devices for heating, ventilation or air conditioning (HVAC) can also be controlled (1 channel). The presence detector has two detection sensors (passive infrared), a brightness sensor, an IR receiver and an LED to indicate a detected movement, in test mode indication of the activated programming mode.

The presence detector can be used as a single detector or in master-slave mode. The setting is carried out in the ETS.

The presence detector can also be set and tested without the ETS, but with the appropriate remote control (available as an accessory).

Indoor installation on ceiling (IP 54) with surface-mounted housing with two screws and plugs.

Optionally, a protective metal basket (available as an accessory) can be installed to protect the lens.

KNX software functions: Movement detection: The detected presence of a person is signalled using a KNX telegram. Lighting control: The room lighting is controlled depending on movement and brightness. If there is sufficient daylight, the lighting is switched off or dimmed to a constant level. Basic lighting: Activates basic lighting after the overtravel time has elapsed, either for a limited time or dependent on the brightness. HVAC control: Devices for heating, ventilation, air conditioning (HVAC) are switched from energy-saving mode to comfort mode dependent on movement. Operating modes: Single detector, Master, Slave, Master in parallel operation. Master: Controls the lighting and HVAC system. Additional detectors as slaves increase the area of detection. Slave: Only detects movement in its area and sends the information to the master. Master in parallel operation: Controls the lighting in its area (can be expanded with additional detectors as slaves). The only master in the installation only controls the HVAC system for the entire area. 2 logic gates

Angle of detection: 360°

Opening angle: 45°

Range: max. 20 x 4 m (tangential)
max. 12 x 4 m (radial)

Mounting height: 2.5 - 5 m

Optimal mounting height: 2.8 m

Time setting: 60 s - 255 min.

Sensors: 2 x passive infrared

Number of zones: 280

Detection brightness: internal light sensor adjustable from approx. 2 to 1000 Lux

Protection rating: IP 54

EC Directives: Low voltage directive 2006/95/EC and EMC directive 2004/108/EC



Dimensions: 124 x 65 mm (Ø x H)

Accessories: Remote control for KNX presence detector MTN6300-0002

Protective basket for KNX presence detector MTN6300-0001


Presence Detectors




KNX ARGUS Presence Basic		KNX ARGUS Presence	
			
Version	Art. no.	Version	Art. no.
polar white	MTN630719	aluminium	MTN630860
aluminium	MTN630760	polar white	MTN630819
<p>Presence detection indoors.</p> <p>If KNX ARGUS Presence detects smaller movements in the room, data telegrams are transmitted via KNX to control the lighting, blind or heating at the same time.</p> <p>When the lighting is controlled by brightness-dependent movement detection, the device constantly monitors the brightness in the room. If sufficient natural light is at hand, the device switches the artificial light off even if a person is present. The overshoot time can be adjusted using the ETS.</p> <p>With integrated bus coupling unit. For ceiling mounting in a size 60 mounting box, optimal installation at 2.5 m. Can also be mounted to ceilings using the surface mounting housing for ARGUS Presence.</p> <p>KNX software functions: Two movement/presence blocks: up to four functions can be triggered per block. Telegrams: 1 bit, 1 byte, 2 bytes.</p> <p>Normal operation (no master/slave), safety pause, disable function. Self-adjusting staircase timer. Actual brightness value: can be specified via the internal and/or an external light sensor.</p> <p>Angle of detection: 360°</p> <p>Range: a radius of max. 7 m (at a mounting height of 2.50 m)</p> <p>Number of levels: 6</p> <p>Number of zones: 136 with 544 switching segments</p> <p>Number of movement sensors: 4</p> <p>Light sensor: internal light sensor infinitely adjustable from approx. 10 to 2000 Lux (ETS); external light sensor via KNX</p> <p>EC Directives: Low-voltage guideline 2006/95/EC and EMC guideline 2004/108/EC</p> <p>Accessories: Surface-mounted housing for ARGUS Presence MTN550619</p> <p>Contents: With bus connecting terminal and supporting plate.</p>		<p>Presence detection indoors.</p> <p>If KNX ARGUS Presence detects smaller movements in the room, data telegrams are transmitted via KNX to control the lighting, blind or heating at the same time.</p> <p>When the lighting is controlled by brightness-dependent movement detection, the device constantly monitors the brightness in the room. If sufficient natural light is at hand, the device switches the artificial light off even if a person is present. The overshoot time can be adjusted using the ETS.</p> <p>With integrated bus coupling unit. For ceiling mounting in a size 60 mounting box, optimal installation at 2.5 m. Can also be mounted to ceilings using the surface mounting housing for ARGUS Presence.</p> <p>KNX software functions: Five movement/presence blocks: up to four functions can be triggered per block. Telegrams: 1 bit, 1 byte, 2 bytes.</p> <p>Normal operation, master, slave, monitoring, safety pause, disable function. Four movement sensors: the sensitivity and range can be set separately for each sensor. Self-adjusting staircase timer. Actual brightness value: can be detected via the internal and/or an external light sensor. Actual value correction.</p> <p>Angle of detection: 360°</p> <p>Range: a radius of max. 7 m (at a mounting height of 2.50 m)</p> <p>Number of levels: 6</p> <p>Number of zones: 136 with 544 switching segments</p> <p>Number of movement sensors: 4, separately adjustable</p> <p>Light sensor: internal light sensor infinitely adjustable from approx. 10 to 2000 Lux (ETS); external light sensor via KNX</p> <p>EC Directives: Low-voltage guideline 2006/95/EC and EMC guideline 2004/108/EC</p> <p>Accessories: Surface-mounted housing for ARGUS Presence MTN550619</p> <p>Contents: With bus connecting terminal and supporting plate.</p>	

Presence Detectors



KNX ARGUS Presence with light control and IR receiver	
	
Version	Art. no.
polar white	MTN630919
aluminium	MTN630960
<p>Presence detection indoors.</p> <p>If KNX ARGUS Presence detects smaller movements in the room, data telegrams are transmitted via KNX to control the lighting, blind or heating at the same time.</p> <p>When the lighting is controlled by brightness-dependent movement detection, the device constantly monitors the brightness in the room. If sufficient natural light is at hand, the device switches the artificial light off even if a person is present. The overshoot time can be adjusted using the ETS.</p> <p>Light control enables the required brightness in a room to be achieved permanently. Dimming and the optional use of a second lighting group maintains a constant brightness.</p> <p>Individual ARGUS Presence configurations can be changed or other KNX devices can be controlled remotely using the IR receiver.</p> <p>With integrated bus coupling unit. For ceiling mounting in a size 60 mounting box, optimal installation at 2.5 m. Can also be mounted to ceilings using the surface mounting housing for ARGUS Presence.</p> <p>KNX software functions: Five movement/presence blocks: up to four functions can be triggered per block. Telegrams: 1 bit, 1 byte, 2 bytes.</p> <p>An additional light control block: brightness can be maintained constant by dimming and an additional adjustable level.</p> <p>IR receiver function. IR configuration: setting the brightness threshold, staircase timer factors or range.</p> <p>Normal operation, master, slave, monitoring, safety pause, disable function. Four movement sensors: the sensitivity and range can be set separately for each sensor. Self-adjusting staircase timer. Actual brightness value: can be detected via the internal and/or an external light sensor. Actual value correction.</p> <p>Angle of detection: 360°</p> <p>Range: a radius of max. 7 m (at a mounting height of 2.50 m)</p> <p>Number of levels: 6</p> <p>Number of zones: 136 with 544 switching segments</p> <p>Number of movement sensors: 4, separately adjustable</p> <p>Light sensor: internal light sensor infinitely adjustable from approx. 10 to 2000 Lux (ETS); external light sensor via KNX</p> <p>Number of IR channels: 10 for controlling KNX devices, 10 for configuration</p> <p>EC Directives: Low-voltage guideline 2006/95/EC and EMC guideline 2004/108/EC</p> <p>Accessories: Surface-mounted housing for ARGUS Presence MTN550619</p> <p>Transmitter: IR universal remote control MTN5761-0000</p> <p>Contents: With bus connecting terminal and supporting plate.</p>	

Surface-mounted housing for ARGUS Presence	
	
Version	Art. no.
polar white	MTN550619
<p>The surface-mounted housing for ARGUS Presence devices also allows them to be surface mounted.</p> <ul style="list-style-type: none">■ for surface-mounting of the LON Multi-Sensor LA-21 (art. no. 42320-104) and LA-22 (art. no. 42320-105)■ colour: polar white (similar to RAL 9010) <p>To be completed with: ARGUS Presence MTN550590, ARGUS Presence with IR receiver and for extension unit operation MTN550591, KNX ARGUS Presence Basic MTN6307..., KNX ARGUS Presence MTN6308..., KNX ARGUS Presence with light control and IR receiver MTN6309..</p>	

Presence Detectors



KNX ARGUS Presence 180/2.20 m flush-mounted



Version	Art. no.
 white, glossy	MTN630444
<input type="checkbox"/> polar white, glossy	MTN630419
<input type="checkbox"/> active white, glossy	MTN630425
 anthracite	MTN630614
 aluminium	MTN630660

For System M.
Presence detection indoors.
If KNX ARGUS Presence detects smaller movements in the room, data telegrams are transmitted via KNX to control the lighting, blind or heating at the same time.
When the lighting is controlled by brightness-dependent movement detection, the device constantly monitors the brightness in the room. If sufficient natural light is at hand, the device switches the artificial light off even if a person is present. The overshoot time can be adjusted using the ETS.
With integrated bus coupling unit. For wall mounting in a size 60 mounting box, optimal installation at 2.2 m. With anti-crawl protection.
KNX software functions: Five movement/presence blocks: up to four functions can be triggered per block. Telegrams: 1 bit, 1 byte, 2 bytes.
Normal operation, master, slave, monitoring, safety pause, disable function. Two movement sensors: the sensitivity and range can be set separately for each sensor. Self-adjusting staircase timer. Actual brightness value: can be detected via the internal and/or an external light sensor. Actual value correction.
Angle of detection: 180°
Range: 8 m right/left, 12 m to the front (for a mounting height of 2.20 m)
Mounting height: 2.2 m or 1.1 m at half the range
Time: adjustable in steps from 1 s to 8 min (potentiometer) or adjustable from 1 s to 255 hours (ETS)
Number of levels: 6
Number of zones: 46
Number of movement sensors: 2, separately adjustable
Light sensor: internal light sensor infinitely adjustable from approx. 10 to 2000 Lux (ETS); external light sensor via KNX
EC Directives: Low-voltage guideline 2006/95/EC and EMC guideline 2004/108/EC
Contents: With bus connecting terminal and supporting plate.
With cover segments to limit the area of detection.

Special Sensors

Other sensors



KNX brightness and temperature sensor



Version	Art. no.
light grey	MTN663991

The sensor records brightness and temperature and transmits these values to the bus. It has a temperature sensor and a brightness sensor.
■ 3 universal channels for single tasks or logic operations. Temperature and brightness threshold in any combination.
■ Sun protection channel for blinds/roller shutter control. Objects for: twilight threshold, brightness threshold, drive control, automatic sun function, teaching, security.
■ Automatic sun protection. Controls the blinds automatically during the day.
■ Teaching object. With this, every brightness threshold can be reset by the touch of a key. Suitable for mounting on an outside wall.
With integrated bus coupler. The bus is connected using a bus connecting terminal.
Power consumption: max. 150 mW
Sensors: 2
Temperature measurement range: - 25 °C to + 55 °C (±5 % or ±1 degree)
Brightness measurement range: 1 to 100,000 lux (±20% or ±5 lux)
Type of protection: IP 54 according to DIN EN 60529 for vertical installation with cover
Dimensions: 110 x 72 x 54 mm



Air Quality Multisensor



Version	Art. no.
polar white	MTN6005-0011

The multisensor monitors the air quality in rooms e.g. in schools or offices. The measured data is sent for processing via the KNX bus. The sensor provides the following data and controls for KNX: CO₂, relative humidity, temperature, dew point, air pressure, VAV control, temperature controller.
In addition, the sensor has 5 inputs: 2 binary inputs, 1 input can be configured as a binary or analog input, 2 inputs can be configured as binary or as temperature sensor input (PT1000, 10 kΩ PTC, 2-/10-/12-/15-/33-/47 kΩ NTC).
The device is intended for mounting on a flush-mounted box or on the wall.
Power supply: bus voltage
Current consumption from bus: max. 10 mA
Ambient temperature: 0 °C ... +50 °C
Measuring range, CO₂: 390 ... 5000 ppm
Measuring range, temperature: 0 °C ... +50 °C
Measuring range, humidity: 0 % ... 100 %
Measuring range, atmospheric pressure: 300 hPa ... 1100 hPa
Type of protection: IP 20
Dimensions: 80.5 x 80.5 x 17 mm